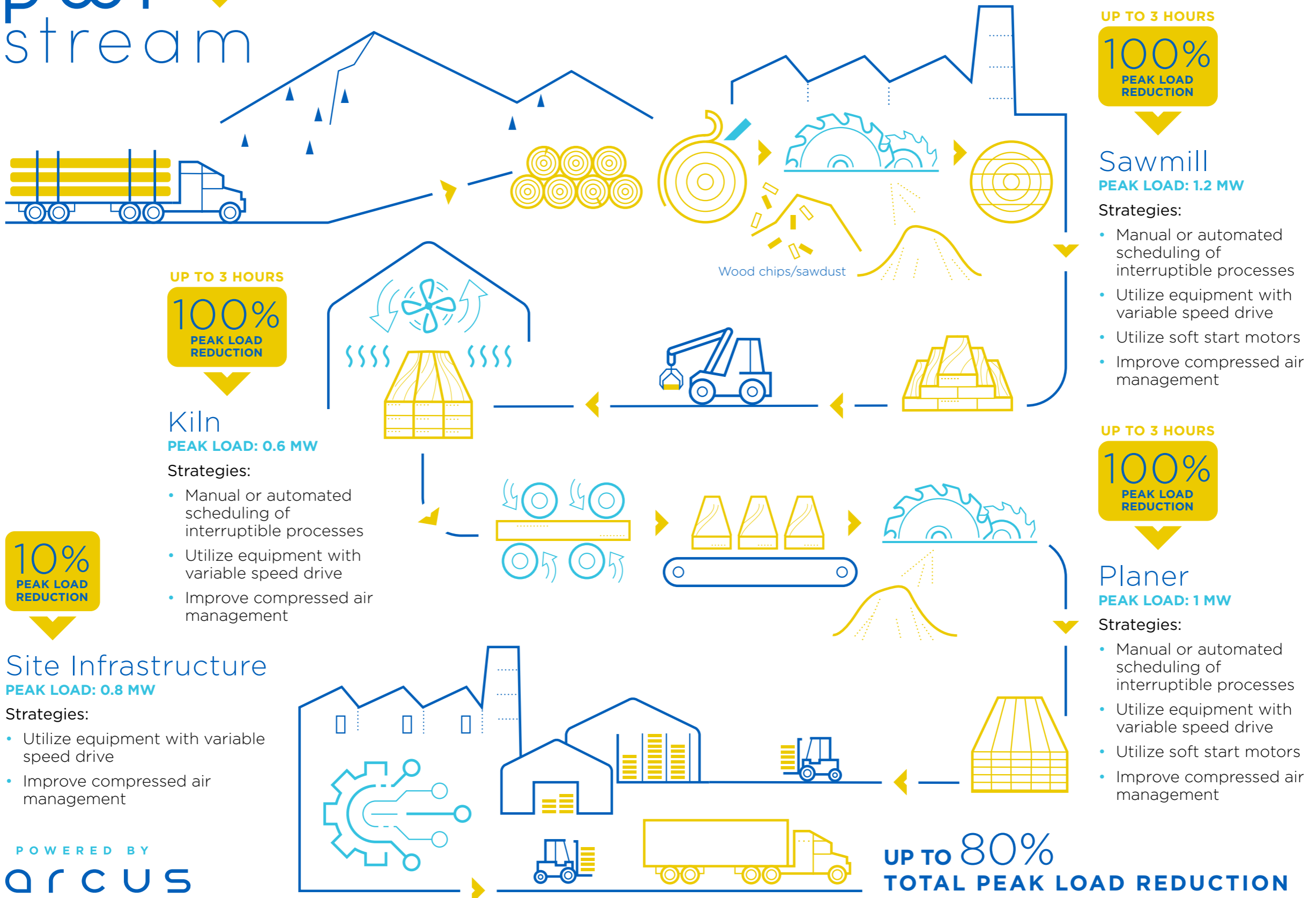


TIMBER MILL

Case study based on 150 million board feet/year timber mill with 3.6MW load.



UP TO 3 HOURS

100%
PEAK LOAD
REDUCTION

Sawmill
PEAK LOAD: 1.2 MW

- Strategies:
- Manual or automated scheduling of interruptible processes
 - Utilize equipment with variable speed drive
 - Utilize soft start motors
 - Improve compressed air management

UP TO 3 HOURS

100%
PEAK LOAD
REDUCTION

Kiln
PEAK LOAD: 0.6 MW

- Strategies:
- Manual or automated scheduling of interruptible processes
 - Utilize equipment with variable speed drive
 - Improve compressed air management

10%
PEAK LOAD
REDUCTION

Site Infrastructure
PEAK LOAD: 0.8 MW

- Strategies:
- Utilize equipment with variable speed drive
 - Improve compressed air management

UP TO 3 HOURS

100%
PEAK LOAD
REDUCTION

Planer
PEAK LOAD: 1 MW

- Strategies:
- Manual or automated scheduling of interruptible processes
 - Utilize equipment with variable speed drive
 - Utilize soft start motors
 - Improve compressed air management