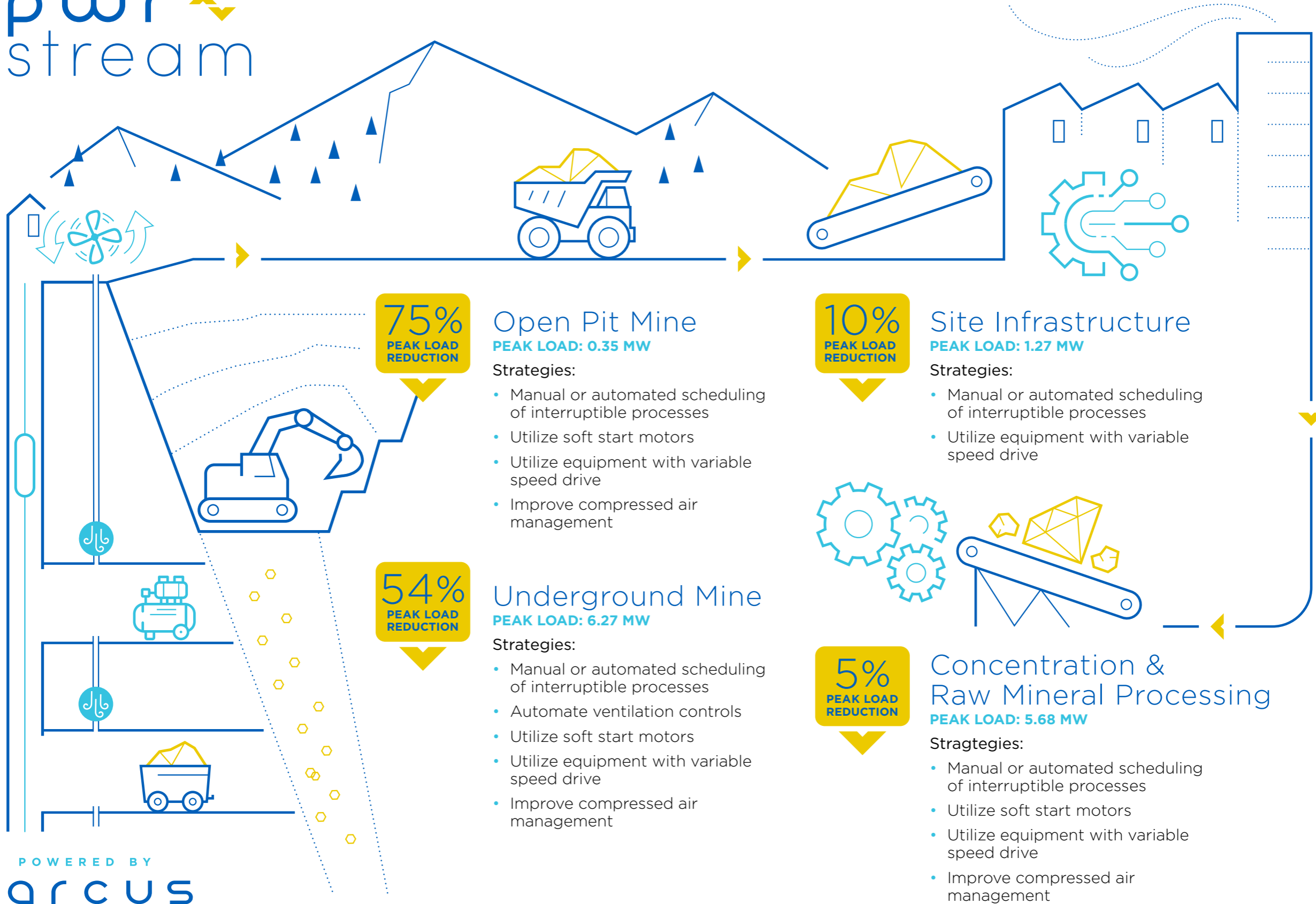


Case study based on 2M Tonne/year diamond mine.



75%
PEAK LOAD
REDUCTION

Open Pit Mine

PEAK LOAD: 0.35 MW

Strategies:

- Manual or automated scheduling of interruptible processes
- Utilize soft start motors
- Utilize equipment with variable speed drive
- Improve compressed air management

10%
PEAK LOAD
REDUCTION

Site Infrastructure

PEAK LOAD: 1.27 MW

Strategies:

- Manual or automated scheduling of interruptible processes
- Utilize equipment with variable speed drive

54%
PEAK LOAD
REDUCTION

Underground Mine

PEAK LOAD: 6.27 MW

Strategies:

- Manual or automated scheduling of interruptible processes
- Automate ventilation controls
- Utilize soft start motors
- Utilize equipment with variable speed drive
- Improve compressed air management

5%
PEAK LOAD
REDUCTION

Concentration & Raw Mineral Processing

PEAK LOAD: 5.68 MW

Strategies:

- Manual or automated scheduling of interruptible processes
- Utilize soft start motors
- Utilize equipment with variable speed drive
- Improve compressed air management